



COMPANY PROFILE

www.rensatgroup.com



COMPANY OVERVIEW

Rensat Group was born out of a simple but powerful idea — that construction support systems should be as strong in quality as they are in purpose. As a forward-thinking organization, we are now charting new territories with plans to expand our footprint across the globe..

We specialize in manufacturing Scaffolding ,Formwork Systems & Accessories built to perform in real-world site conditions. Our products are not just functional — they're reliable, durable, and safe. Every Rensat solution is backed by technical expertise, strict quality controls, and decades of hands-on experience.





VISION AND MISSION



Vision

To become the #1 trusted global brand for scaffolding and shuttering equipment, known for quality, ethics, and growth partnerships.

Mission

- Deliver safe, durable, and globally certified scaffolding systems
- Create win-win solutions for contractors and importers worldwide
- Position ourselves not just as vendors — but as business growth partners

MEET THE TEAM



Shivam Sharma

(Managing Director)



Sahil Sharma

(Director Global Business)



Parul Bali

(Marketing Head)

Our leadership team drives the company's vision with experience, expertise, and passion, ensuring the delivery of innovative, high-quality solutions globally. However, the true strength of RENSAT Group lies in the many unsung heroes — our dedicated staff members — whose hard work and commitment power every success





MANUFACTURING PLANT



We operate with a focus on in-house manufacturing, ensuring complete control over quality, design, and delivery timelines. From raw material processing to final product packaging, every step is managed with discipline and attention to detail.

What Makes Our Plant Different?

- ✓ Fully In-House Production: Total control over processes, from start to finish.
- ✓ Machinery That Matters: Equipped with hydraulic presses, cutting tools, welding bays, threading machines.
- ✓ Lean Manufacturing: Optimized workflow, minimal waste, and fast turnaround.
- ✓ Flexible Output: Capable of handling high-volume orders.
- ✓ Skilled Manpower: Trained teams focused on accuracy and consistency.





Our Approach to Quality

Every Rensat component — be it a cuplock system, ringlock system, or prop — is manufactured under tight supervision.

We implement multi-stage inspections, including:

- Material hardness and thickness tests
- Dimensional checks
- Load testing
- Surface coating inspections

Our factory operations comply with export-grade standards, and we work to align with ISO procedures that our global partners trust.



EXPORT PALLET PACKING

At Rensat, we prioritize the safe and efficient transportation of our Scaffolding Equipment to customers worldwide. With over a decade of experience, we ensure every product is meticulously packed and loaded to meet international shipping standards.

- **Durable material-** We use *high quality pallets designed to withstand long distance shipping.*
- **Weight Optimization-** *Each pallet is optimized for weight and balance to reduce handling risks.*
- **Strategic Arrangement-** *Products are loaded systematically to maximize space utilization while preventing damage during transit.*
- **Quality Checks -** *Our team conducts thorough inspections at every step to ensure compliance with global export standards.*
- **Secure Loading Techniques -** *Advanced techniques & tools are used to secure pallets inside containers, ensuring they remain intact from dispatch to delivery.*

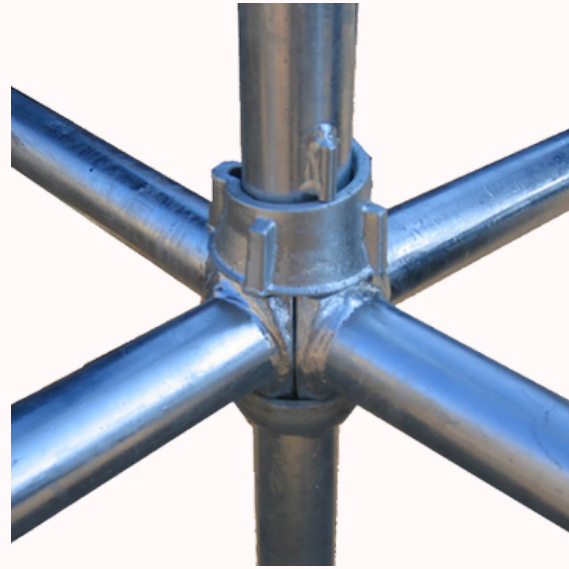




PRODUCT CATALOG

SCAFFOLDING & FORMWORK

CUPLOCK SYSTEM



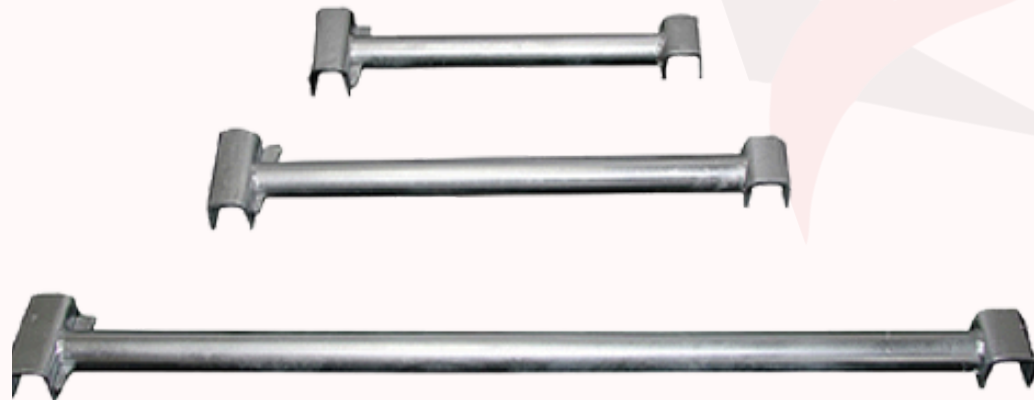
**CUPLOCK SCAFFOLDING
SYSTEM**



CUPLOCK STANDARD



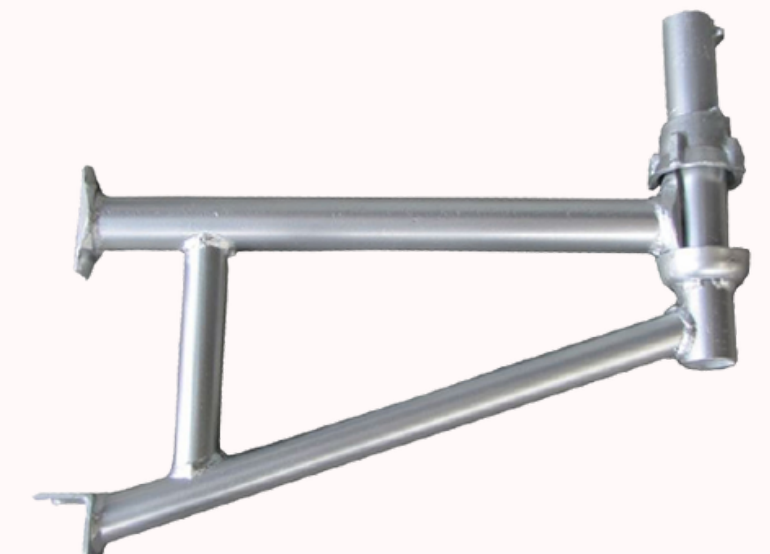
Cuplock-Horizontal Ledger



Cuplock Intermediate Transom



Cuplock Braces



**Cuplock Two Board
Bracket**

CUPLOCK ACCESSORIES

OUR PRODUCTS



TOP CUP (CASTED)



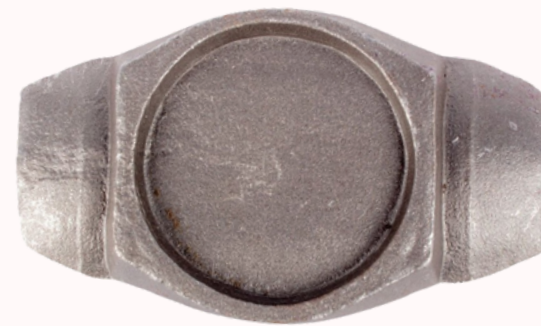
TOP CUP (FORGED)



BOTTOM CUP



JOINT PIN



LEDGER BLADE

COUPLERS

OUR PRODUCTS



**SWIVEL COUPLER
(PRESSED)**



**FIXED/DOUBLE/RIGHT ANGLE
COUPLER (PRESSED)**



**SWIVEL COUPLER
(FORGED)**



**FIXED /DOUBLE COUPLER
(FORGED)**



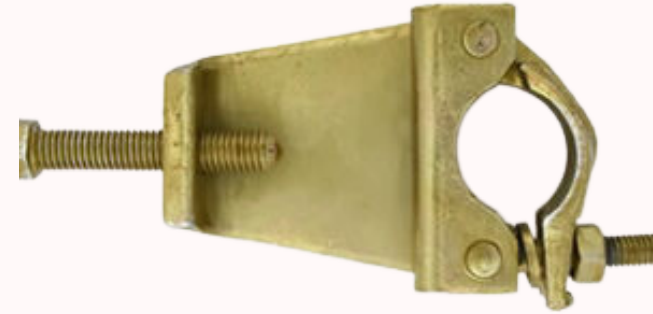
**HALF COUPLER
(PRESSED)**



**HALF COUPLER
(FORGED)**



**BOARD RETAINING
COUPLER**



BEAM/GIRDER COUPLER



SLEEVE COUPLER



PUTLOG COUPLER



LADDER COUPLER



PUTLOG HEAD



HOLLOW BASE JACK



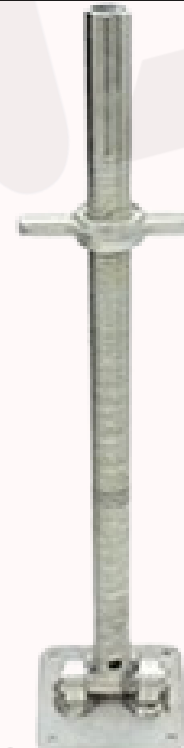
SOLID BASE JACK



HOLLOW UNIVERSAL JACK



SOLID UNIVERSAL JACK



HOLLOW SWIVEL BASE JACK



SWIVEL ROOF JACK

JACKS & BASE PLATES

OUR PRODUCTS



HOLLOW U BASE JACK



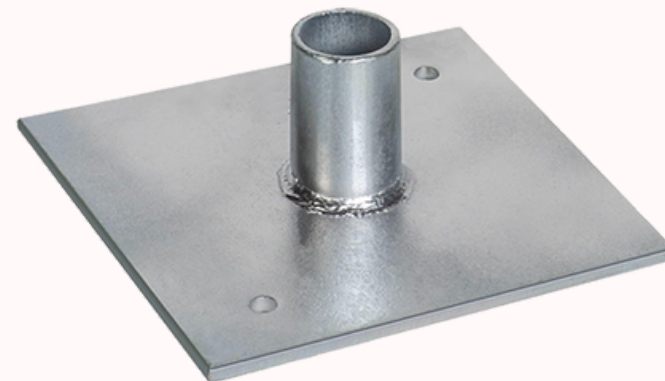
SOLID U HEAD JACK



FORK HEAD BASE JACK



UNIVERSAL JACK CLAMP



BASE PLATE

PROP NUTS



L & T TYPE WITH HANDLE



REGULAR WITH HANDLE



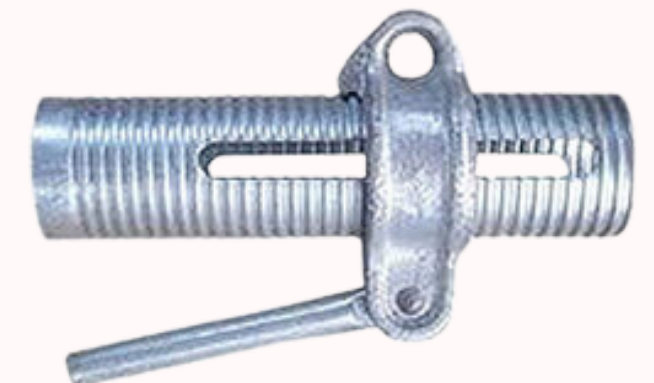
**PROP NUT WITH HANDLE
(LIGHT)**



STRAIGHT HANDLE TYPE



PROP SLEEVE



**PROP SLEEVE WITH HANDLE &
NUT**

JACK NUTS



CUP NUT 28/30MM



32/34 MM



JACK NUT 38 MM



**JACK NUT 48 MM
(LIGHT & HEAVY)**



JACK NUT 30/32 MM



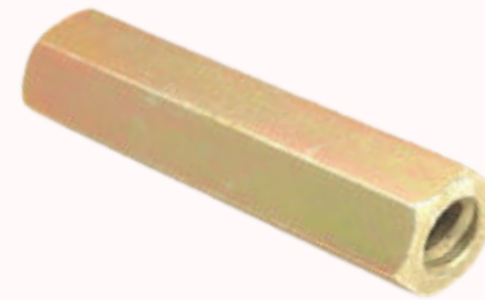
34/36 MM

FORMWORK NUT & BOLTS

OUR PRODUCTS



GOGO NUT



HEX NUT



SPAN BOLT



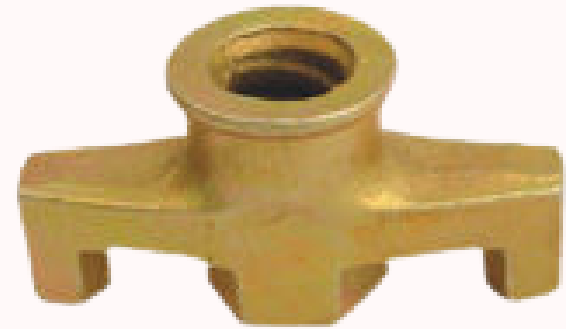
SHUTTERING CLAMP



EYE BOLT

FORMWORK ACCESSORIES

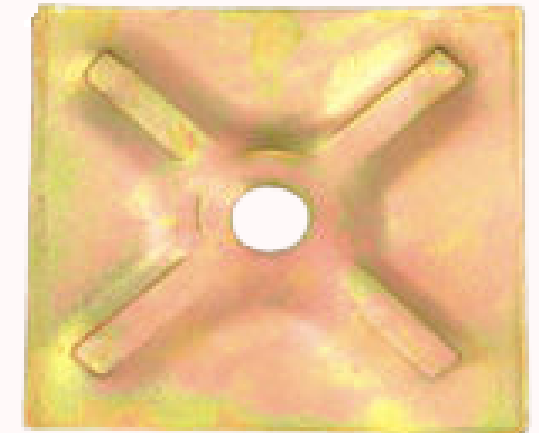
OUR PRODUCTS



WING NUT



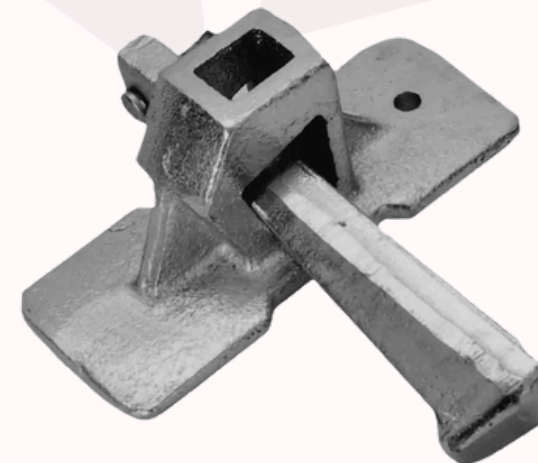
TIE ROD



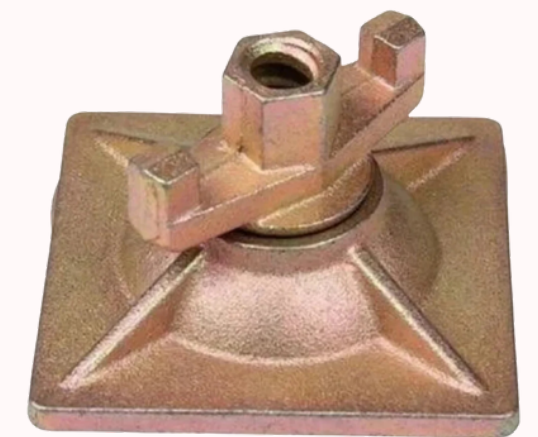
WALLER PLATE



WATER STOPPER



**RAPID CLAMP
(WITH TEMPERED
WEDGES)**



COMBINATION PLATE

FORMWORK ANCHOR NUT

OUR PRODUCTS



**90MM LIGHT & HEAVY
(2 WINGS)**



100MM LIGHT & HEAVY



90 MM (3 WINGS)



90 MM (3 WINGS)



50 MM



130 MM



BRACE LOCK PIN



D PIN



CONNECTING PIN



SPRING LOCK PIN

RING LOCK SYSTEM

OUR PRODUCTS



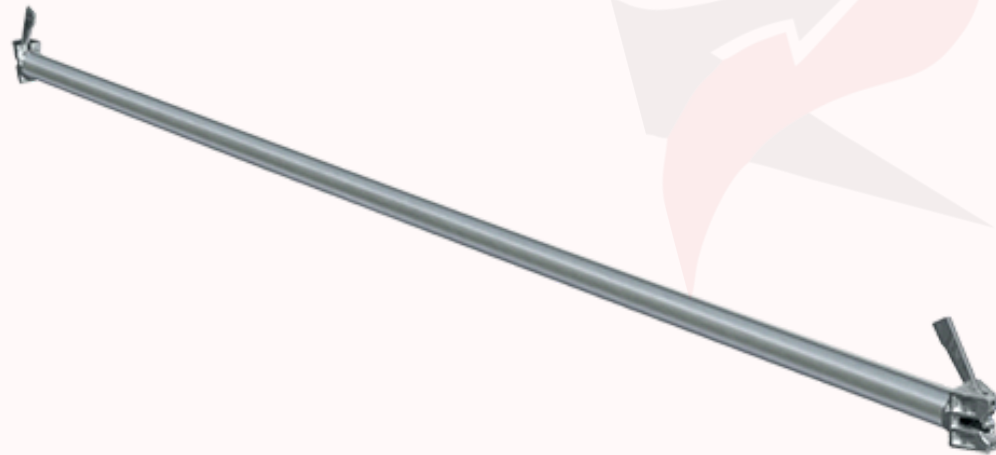
RING LOCK BASE COLLAR



BRACE



BRACE ENDS



LEDGER



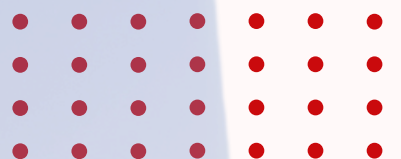
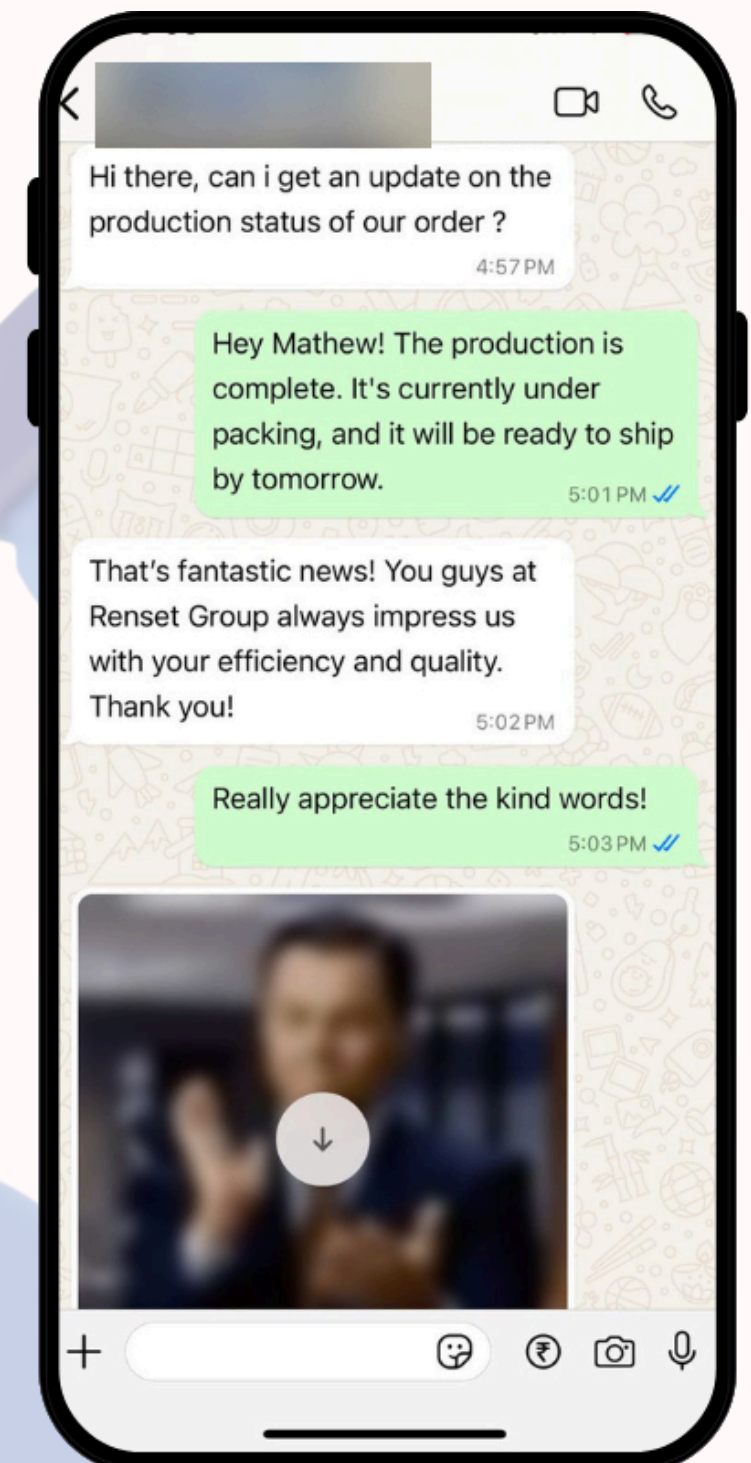
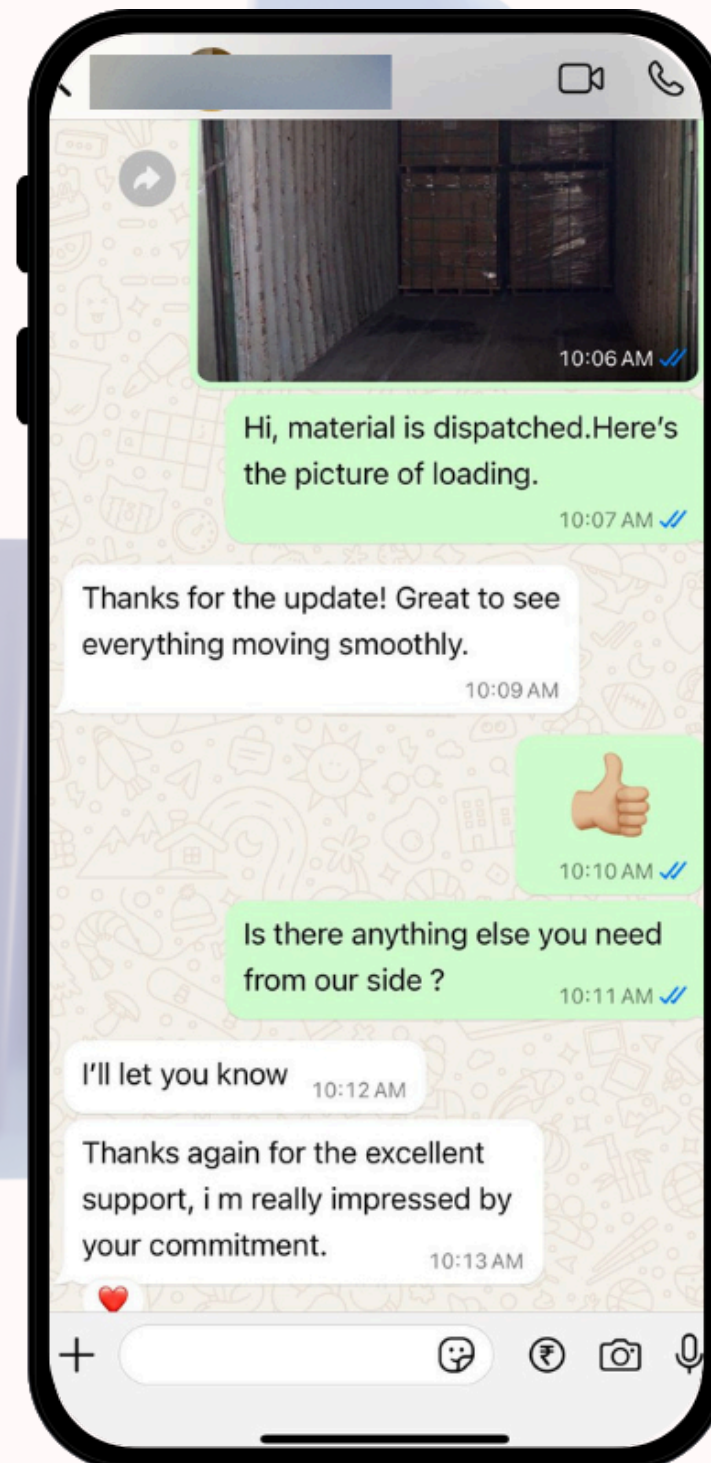
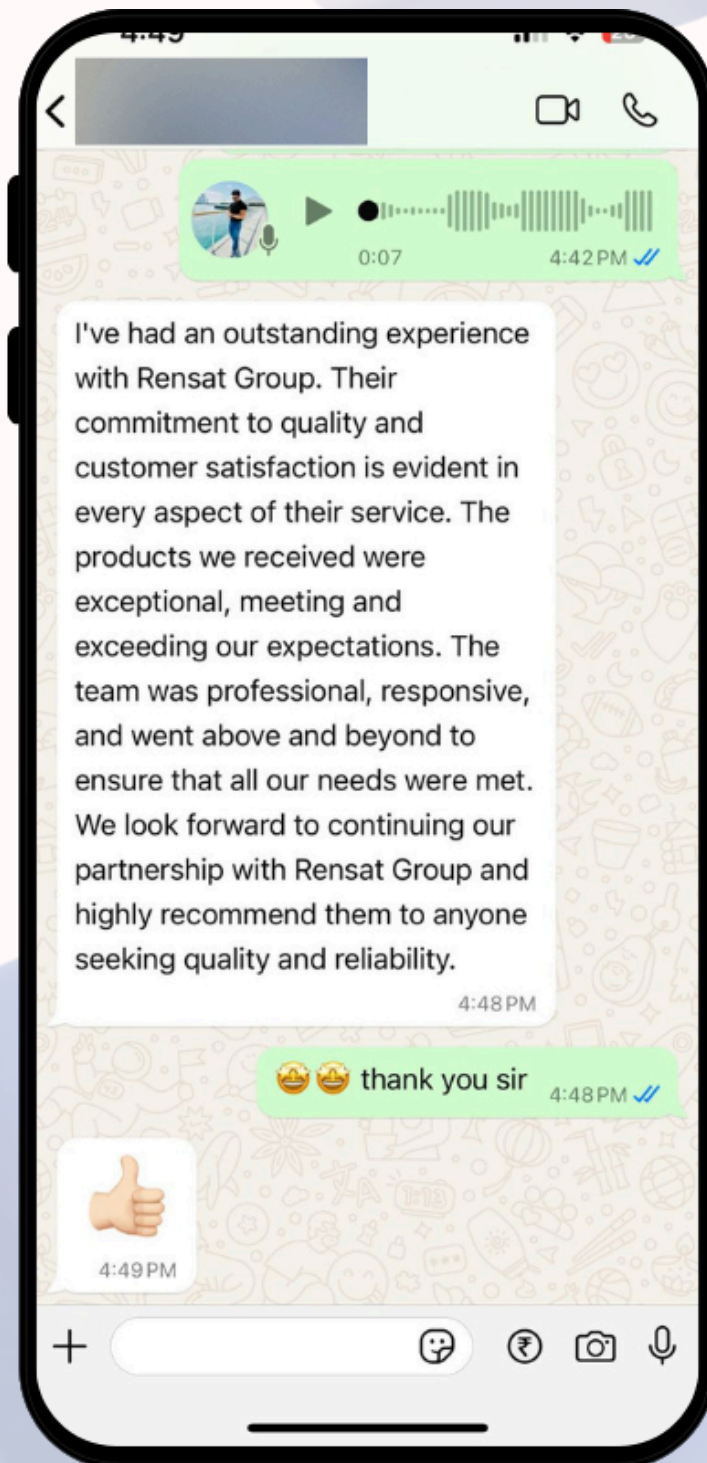
LEDGER END



ROSSET RING

TESTIMONIALS & FEEDBACK

Real Stories from Valued Clients



CERTIFICATES

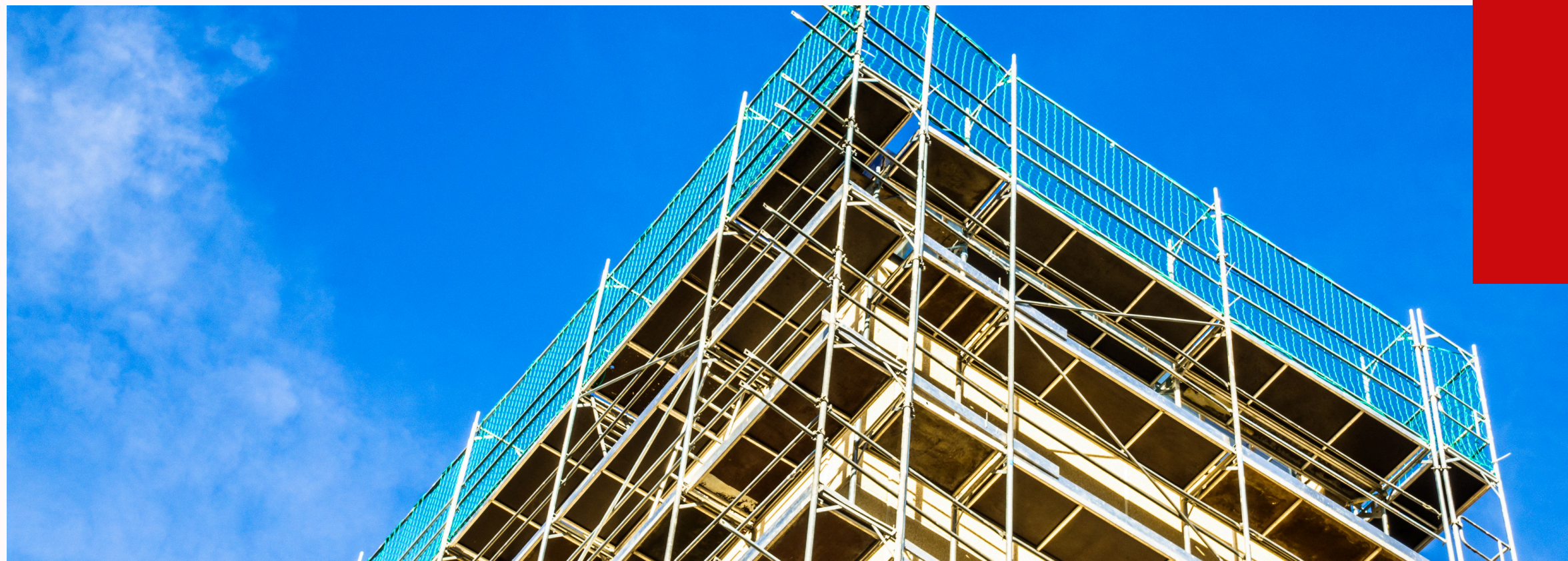
We proudly meet & exceed our industry standards



THANK YOU!

Rensat Group

Corporate Office No. 1137 Akash Avenue , Amritsar, Punjab
,India (Pincode- 143001)



+91-9878130488



Info@rensatgroup.com

Shivshaktiexport.india@gmail.com



www.rensatgroup.com

